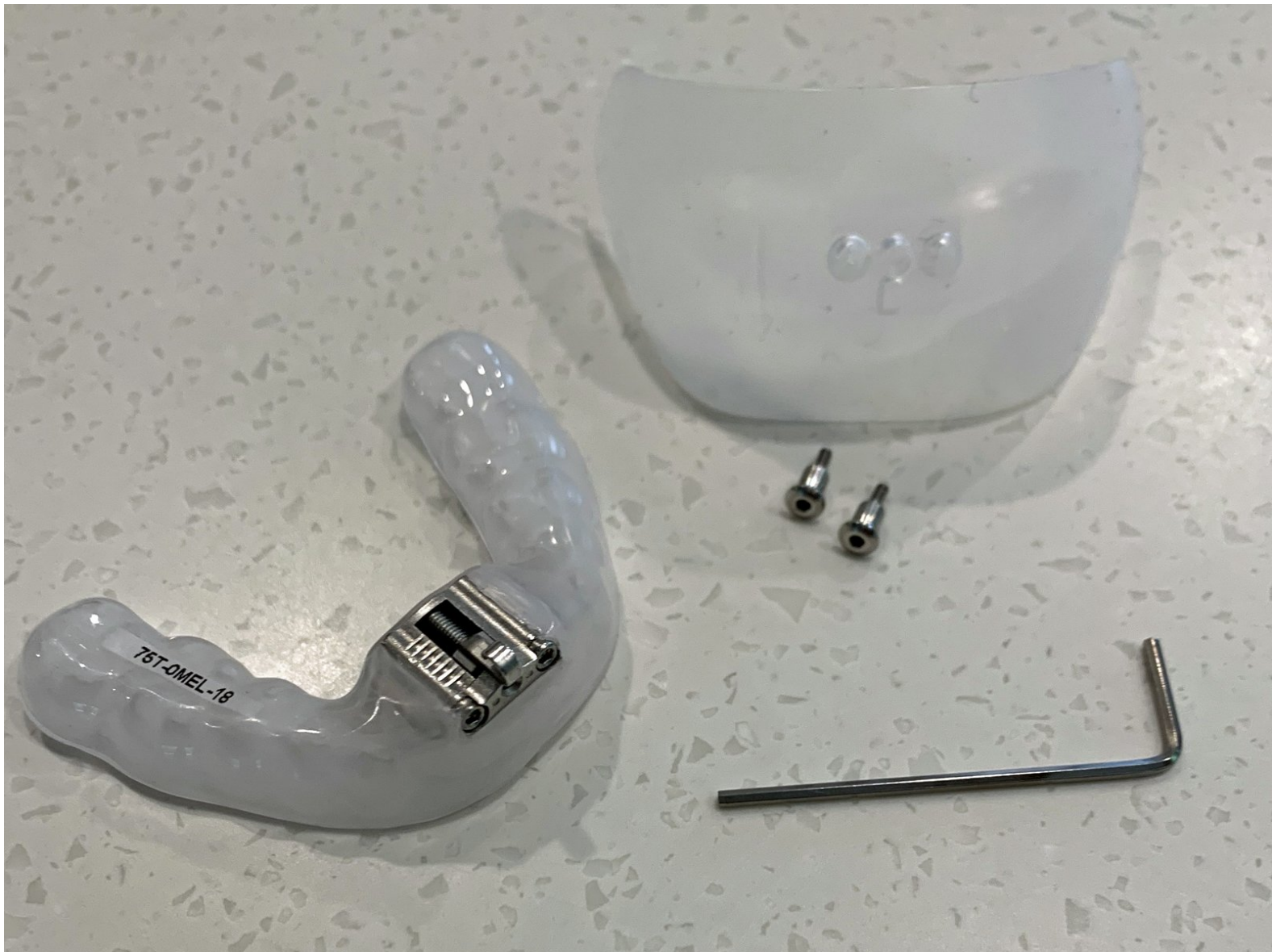


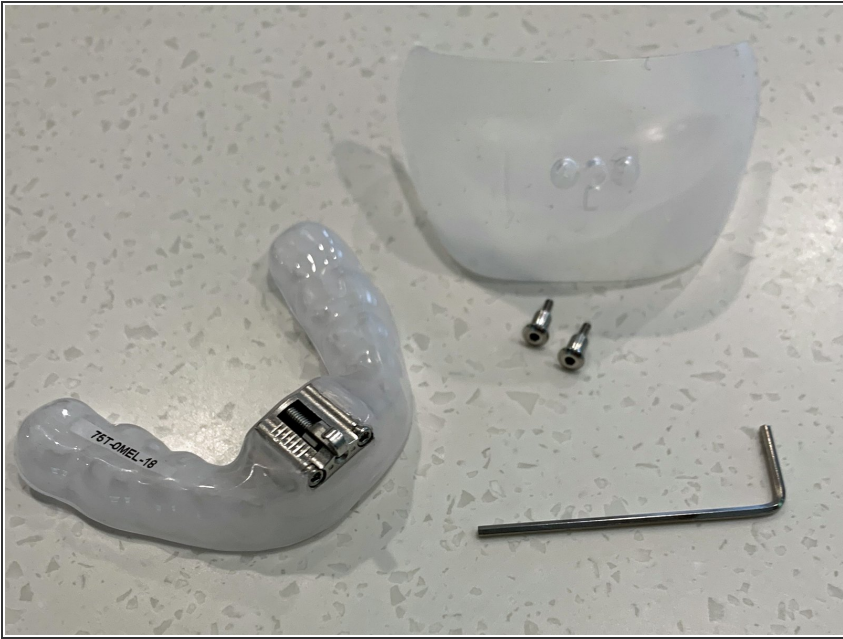
# Installing a Mouth Shield

This is a simple 5 min process to install the mouth shield on a TAP appliance

Written By: Patrick Tessier

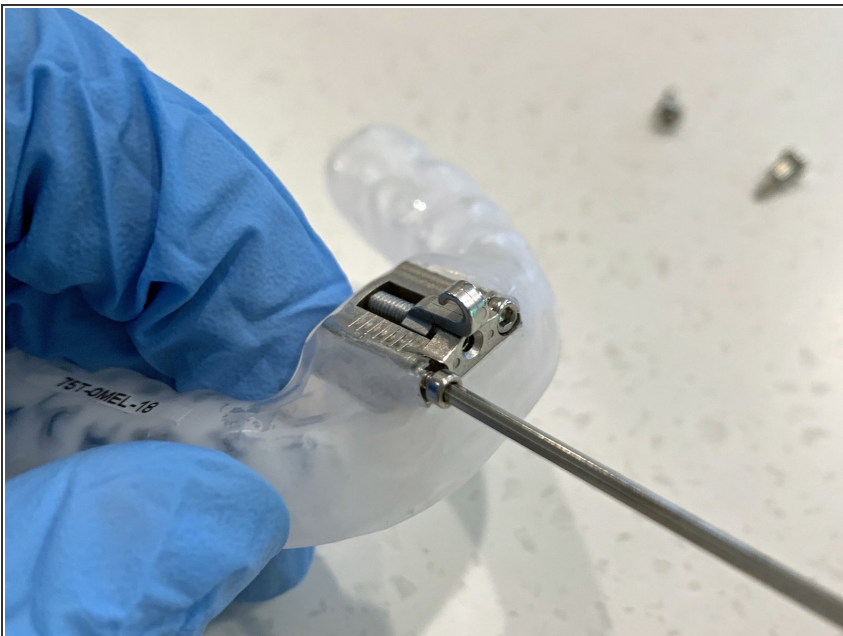


## Step 1 — The Mouth Shield Kit



- The kit comes with
  - Two "buttons" that replace the locking screws on the front plate
  - The mouth shield
  - A hex key driver to remove the locking screws and install the buttons

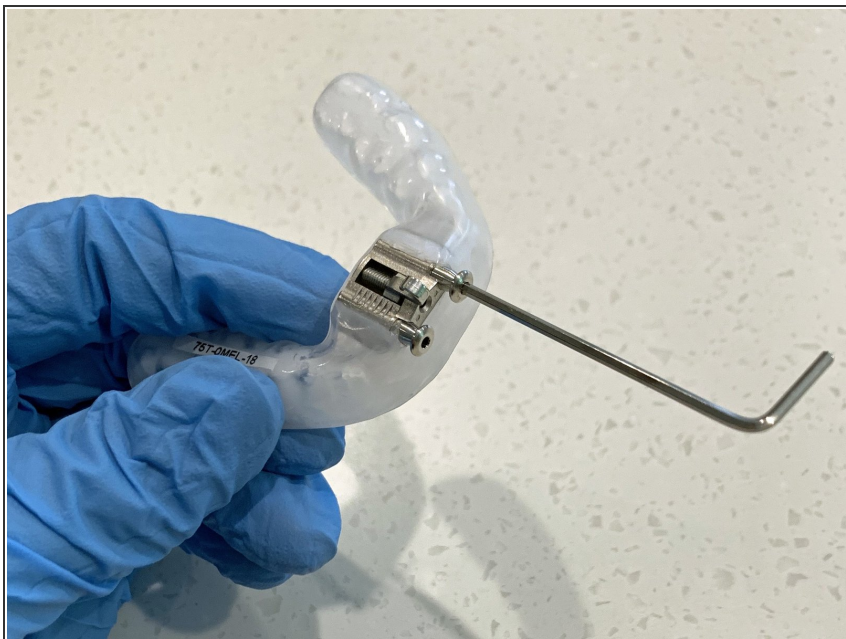
## Step 2 — Step 1: Remove the side screws



- First step is to remove the two locking screws on the both sides of the front plate of the appliance
- ⚠ Careful with the locking screws. They can be easily dropped and lost.
- Use the hex key to remove in a counter clockwise direction.

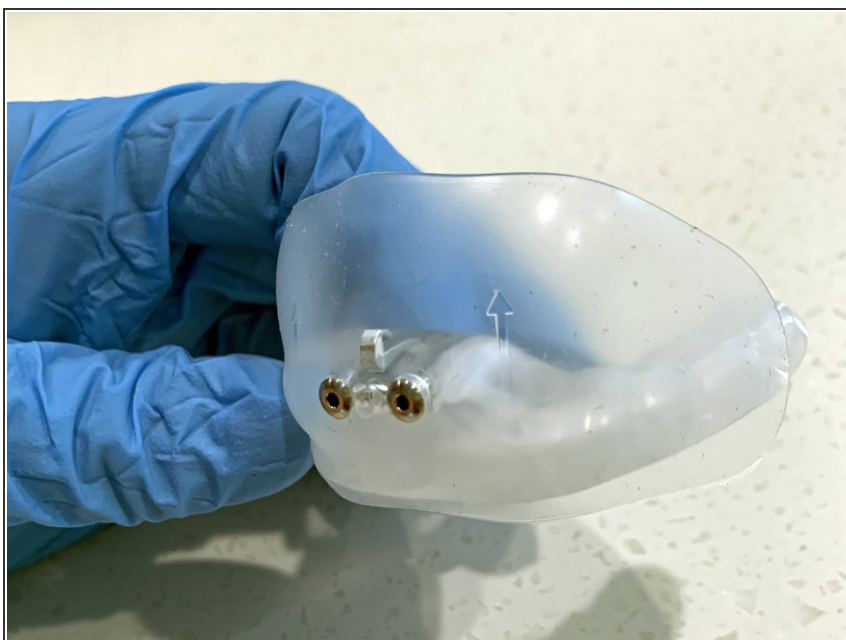


### Step 3 — Install the Buttons



- Install the buttons with the included hex driver on both sides.
- Turn clockwise and don't over tighten. Just make it snug

### Step 4 — Install the mouth shield



- Grab the mouth shield and push onto the buttons.
- ⓘ Notice the arrow on the mouth shield should be in the up direction.
- ⓘ Notice the hole in the middle allows for protrusion adjustment, while the mouth shield is in place.