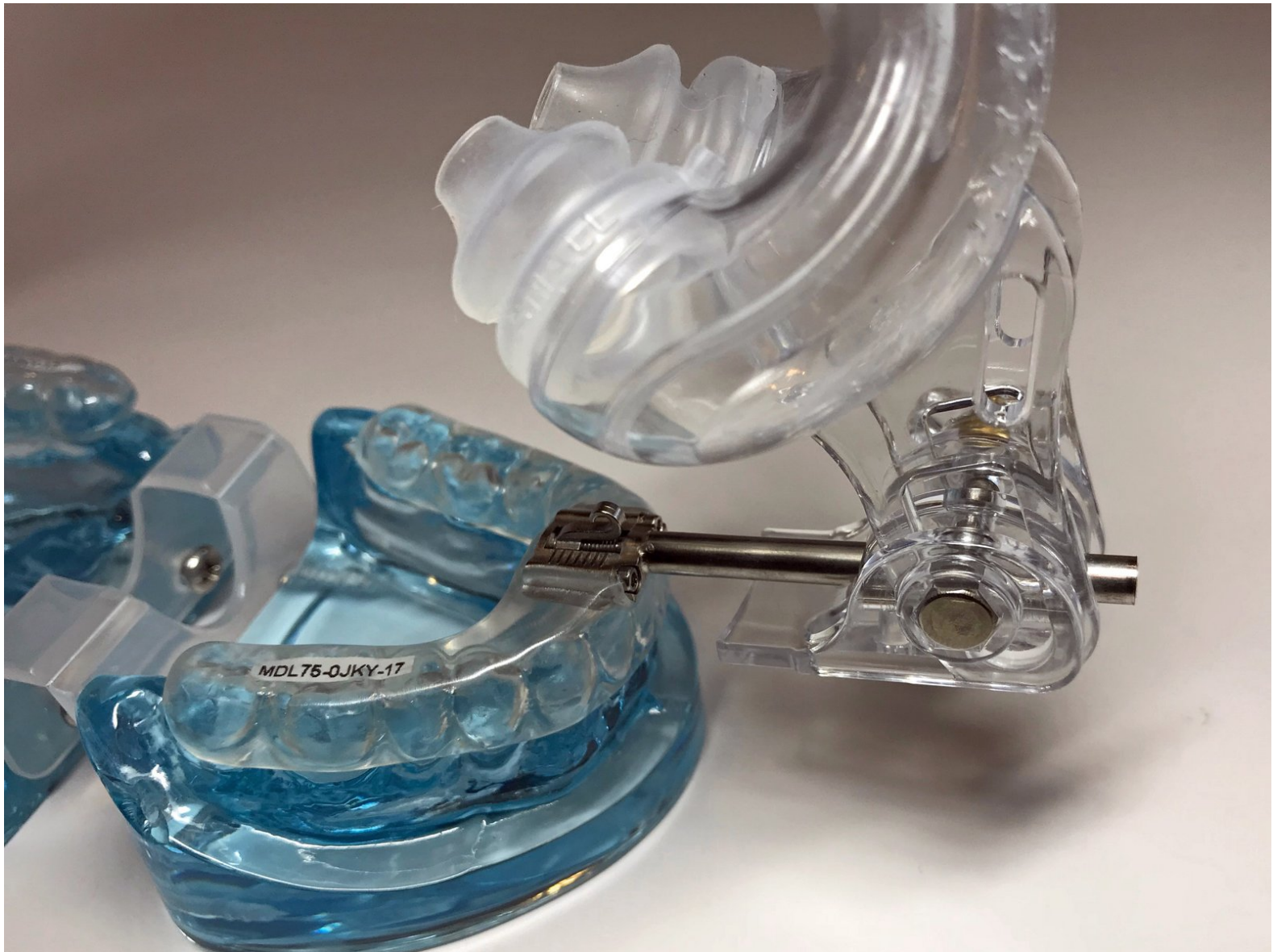


How to build the TAP PAP CS

Written By: Patrick Tessier



INTRODUCTION

The TAP PAP CS can be added to:

- TAP 3
- TAP 3 Elite
- dreamTAP

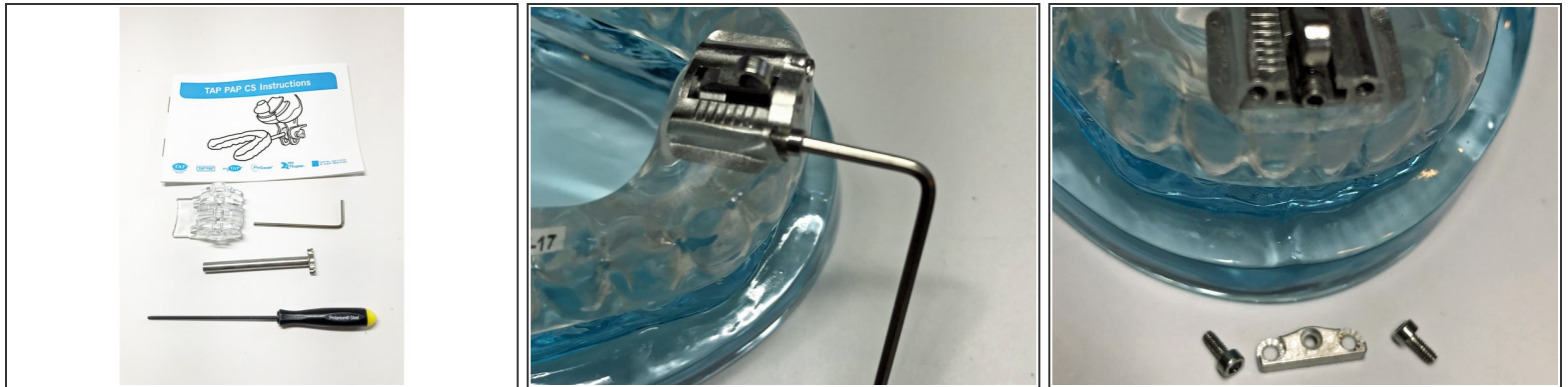
It's actually simpler than changing a hook.



PARTS:

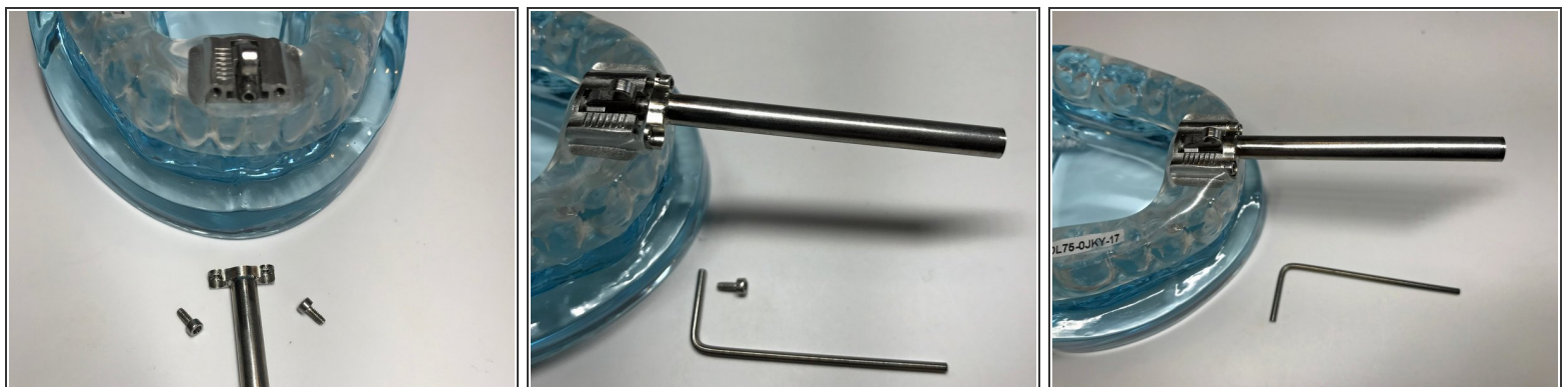
- [TAP PAP CS Post](#) (1)
 - [TAP PAP NPM Frame](#) (1)
-

Step 1 — Remove the Front Plate



- The TAP PAP CS Connector kit is comprised of the Post, a short 1.5mm hex key, a long Adjustment hex key and the clear plastic post/mask interface.
- First step is to remove the front plate from the appliance.
 - Use the small 1.5mm hex key to remove the 2 outer locking screws.
 - Then pry off the front plate.
- ⓘ You may need to remove any excess acrylic that may be covering the front plate.

Step 2 — Install the Post



- Get the post ready with the two locking screws.
- Use the 1.5mm hex key to screw on the locking screws.
- Make sure they are hand tight. Do Not overtighten.
- ⓘ There should be no gap between the front plate and the screw base.

Step 3 — Assemble the TAP PAP mask



- The TAP PAP Mask kit has three part: The tube and mask, bolt and nut.
- It also comes with three sets of nasal pillows. S/M/L
- Slide the interface onto the mask
- Insert the bolt through the assemble and attach the nut.
- Then slide the whole thing onto the post.
- ⓘ The fit will be quite tight. You may want to twist back and forth as you slide in onto the post.
- Lightly tighten the nut to hold in place.

Step 4 — Fitting nasal pillows



- The TAP PAP Nasal Pillow Mask comes with 3 sizes of Nasal Pillows. Hold the Mask Frame with the Medium size Pillow against your nostrils to check for sizing. You should use the largest size Pillow that you can, ensuring that the Pillow outlets fit comfortably into your nostrils. .
 - If you are unsure, you can try the different sizes after you have completed the fitting process and have connected your mask to your CPAP machine
- Place the TAP appliance in your mouth with the TAP PAP CS attached.
- Adjust the Mask Frame so the Pillows rest gently against your nostrils. The Mask Frame can move up and down, closer and further away from your nose and the angle can be changed.
- Holding the mask in place with one hand, firmly tighten the Plastic Nut to lock the Mask Frame in place.